

PARTS LIST FOR

Wire Feeder Welders

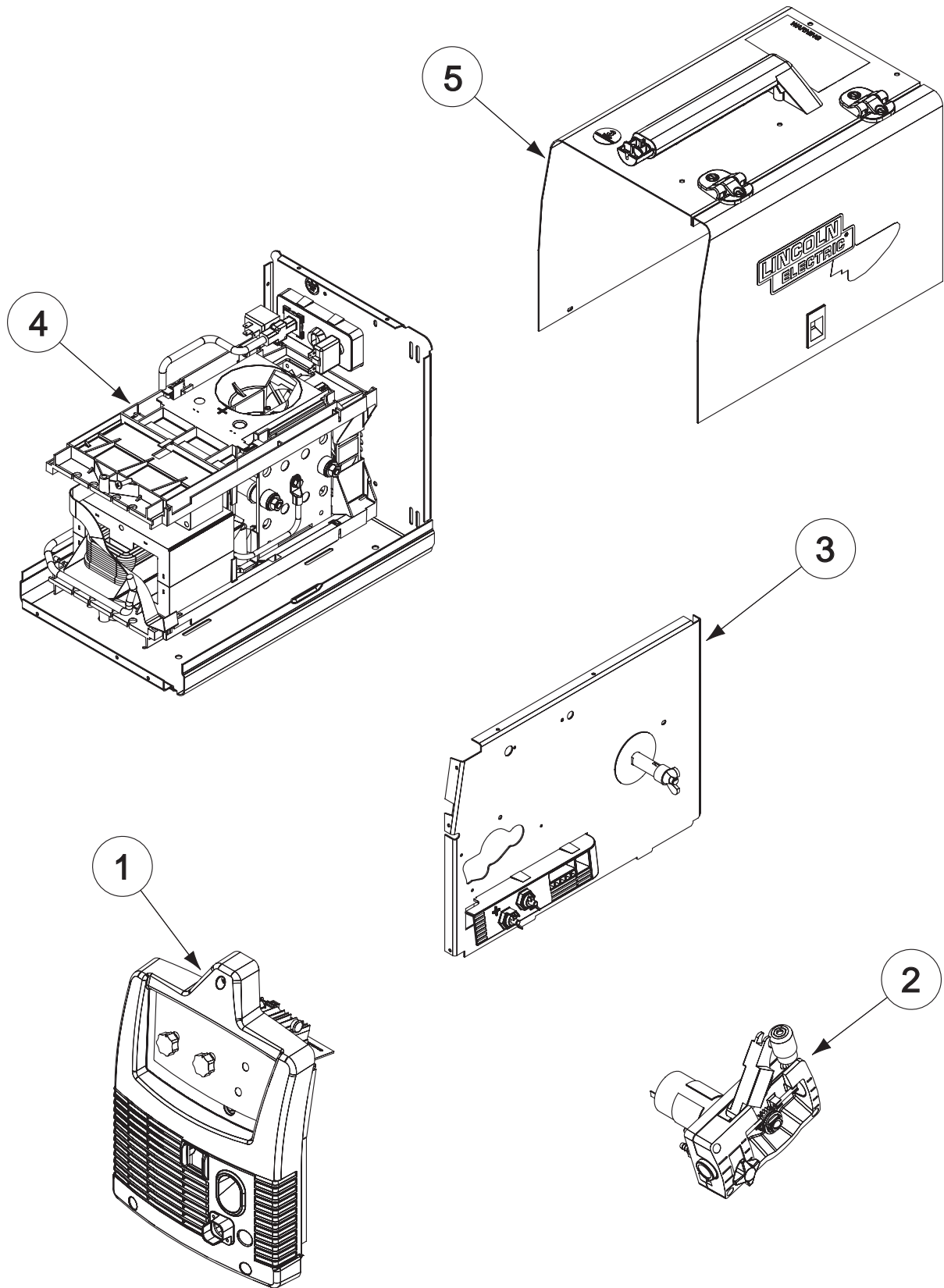
(125, 140, 180 Models)

WIRE FEEDER WELDERS (125, 140, 180 MODELS)



Index of Sub Assemblies
Illustration of Sub Assemblies
Index of Sub Assemblies
Illustration of Sub Assemblies
Index of Sub Assemblies
Illustration of Sub Assemblies
Index of Sub Assemblies
Illustration of Sub Assemblies

ILLUSTRATION OF SUB-ASSEMBLIES



Index of Sub Assemblies

Wire Feeder Welders (125, 140, 180 Models)

For Codes: 11173, 11175, 11300, 11302, 11303, 11304, 11440, 11441, 11501, 11502, 11503, 11504, 11505, 11506, 11550 & 11658

Do Not use this Parts List for a machine if its code number is not listed. Contact the Service Department for any code numbers not listed.

Use the Illustration of Sub-Assemblies page and the table below to determine which sub assembly page and column the desired part is located on for your particular code machine.

Sub Assembly Item No.			1	2	3	4	5		
SUB ASSEMBLY PAGE NAME	Optional Equipment Listing	Miscellaneous Items	Case Front & Control P.C. Board Assembly	Wire Drive Assembly	Center Panel Assembly	Case Back, Bottom & Power Module Assembly	Wraparound & Door Assembly	Magnum 100 L Gun & Cable K530-6	
PAGE NO.	P-532-B.1	P-532-B.2	P-532-C	P-532-D	P-532-E	P-532-F	P-532-G	P-202-E.2	
CODE NO.									
11173 (PRO MIG™ 140)		3	1	1	1	2	1		
11175 (PRO MIG™ 180)		1	1	1	1	3	1		
11300 (PRO CORE™ 125)		2	1	1	1	1	1		
11302 (WELD PAK® 125HD)		2	1	1	1	1	1		
11303 (WELD PAK® 140HD)		3	1	1	1	2	1		
11304 (WELD PAK® 180HD)		1	1	1	1	3	1		
11440 (MIG PAK® 140)		3	1	1	1	2	2		
11441 (MIG PAK® 180)		1	1	1	1	3	2		
11501 (SP-140T)		3	1	1	1	2	1		

Wire Feeder Welders (125, 140, 180 Models)

For Codes: 11173, 11175, 11300, 11302, 11303, 11304, 11440, 11441, 11501, 11502, 11503, 11504, 11505, 11506, 11550 & 11658

Do Not use this Parts List for a machine if its code number is not listed. Contact the Service Department for any code numbers not listed.

Use the Illustration of Sub-Assemblies page and the table below to determine which sub assembly page and column the desired part is located on for your particular code machine.

Sub Assembly Item No.			1	2	3	4	5		
SUB ASSEMBLY PAGE NAME	Optional Equipment Listing	Miscellaneous Items	Case Front & Control P.C. Board Assembly	Wire Drive Assembly	Center Panel Assembly	Case Back, Bottom & Power Module Assembly	Wraparound & Door Assembly	Magnum 100 L Gun & Cable K530-6	
PAGE NO.	P-532-B.1	P-532-B.2	P-532-C	P-532-D	P-532-E	P-532-F	P-532-G	P-202-E.2	
CODE NO.									
11502 (SP-180T)		1	1	1	1	3	1		
11503 (EASY-CORE™ 125)		2	1	1	1	1	1		
11504 (EASY-MIG™ 140)		3	1	1	1	2	1		
11505 (EASY-MIG™ 180)		1	1	1	1	3	1		
11506 (WORK-PAK™ 125)		2	1	1	1	1	1		
11550 (CORE PAK® 125)		2	1	1	1	1	1		
11658 (SP-140T)		4	1	1	1	2	1		

Illustration of Sub Assemblies

NOTES

Index of Sub Assemblies

Index of Sub Assemblies

Index of Sub Assemblies

Index of Sub Assemblies

WIRE FEEDER WELDERS (125, 140, 180 MODELS)



OPTIONAL EQUIPMENT LISTING

Miscellaneous Options Available for your machine are listed below:

Indicates a change this printing.

DESCRIPTION	PART NUMBER
Mig Conversion Kit (125 Amp)	Order K2526-1
.035 U Groove Drive Roll Kit	Order KP2529-4
Incoming/Outgoing Wire Guide Set	Order KP2530-1
.025/.035 Steel Wire Guide Kit	Order KP2531-1
.045 Steel Wire Guide Kit	Order KP2531-2
Magnum 100SG Spool Gun	Order K2532-1



Index of Sub Assemblies

Indicates a change this printing.

Use only the parts marked "x" in the column under the heading number called for in the model index page.

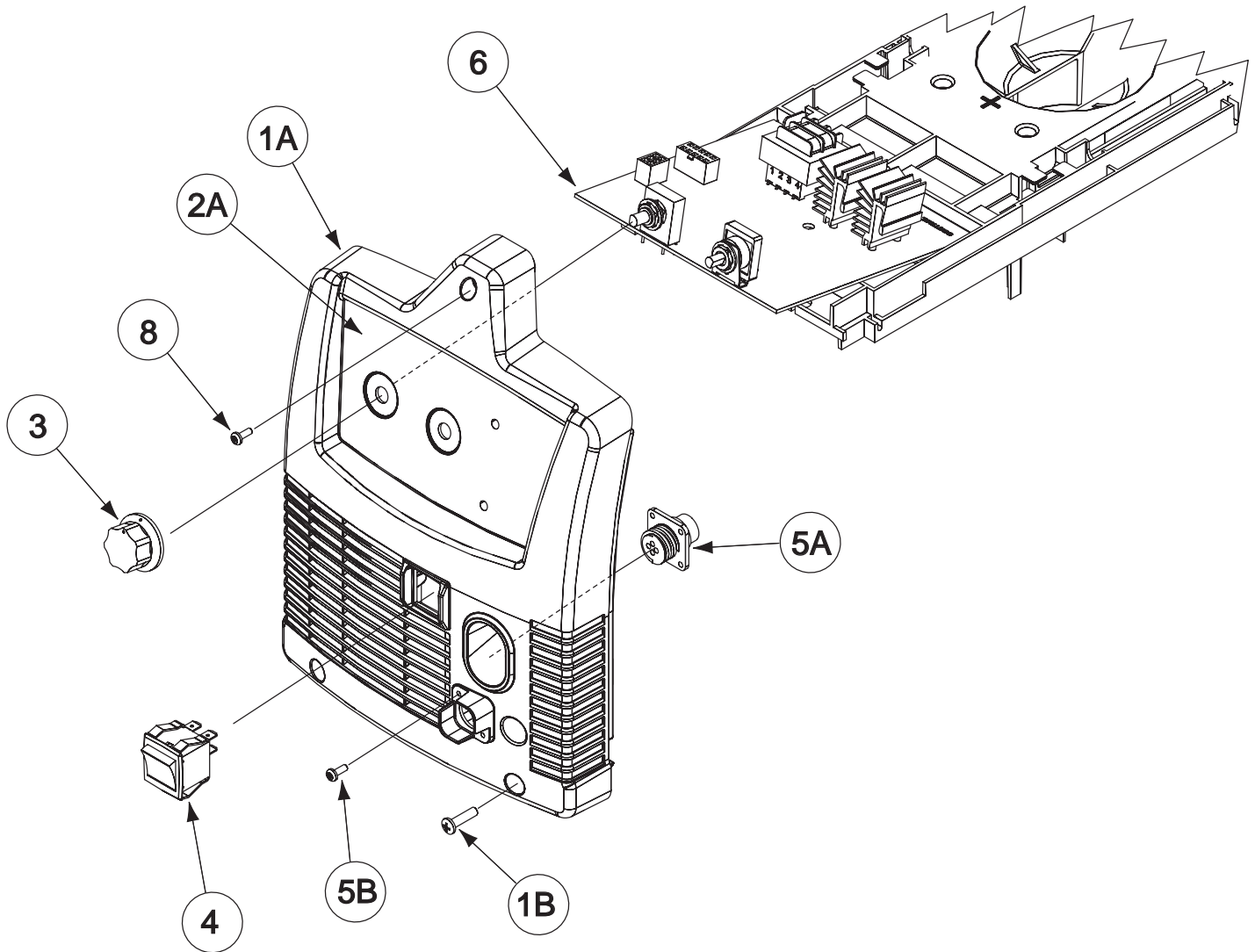
DESCRIPTION	PART NO.	QTY.	1	2	3	4	5	6	7	8	9
Plug & Lead Assembly	S18250-909	1	X	•	•	•					
Plug & Lead Assembly	S18250-908	1	•	X	X	X					
Plug & Lead Assembly	S18250-916	1	X	X	X	X					
Plug & Lead Assembly	S18250-917	1	X	X	X	X					
Work Cable	S11609-29	1	•	X	X	X					
Work Cable	S11609-30	1	X	•	•	•					
Work Clamp	M12033	1	X	X	X	X					
DVD (Arc Welding)	S26375	1	X	X	X	X					
Wire Reel Spindle Adapter	M15445	1	X	X	X	•					
Wire Reel Spindle Adapter	M15445-1	1	•	•	•	X					#
Hand Shield	G3364	1	X	X	X	•					
Gas Regulator (Argon Mixed)	S25805 *	1	X	•	X	•					
Regulator	3000290	1	•	•	•	X					#
Gas Hose Assembly	S19303	1	X	•	X	X					
Spot Timer & Spool Gun Decal	T13086-200	1	X	X	X	X					#

* Deluxe version available as K586-1.
Includes S19303 Gas Hose Asbly



Index of Sub Assemblies

Case Front & Control P.C. Board Assembly



Indicates a change this printing.

Use only the parts marked "x" in the column under the heading number called for in the model index page.

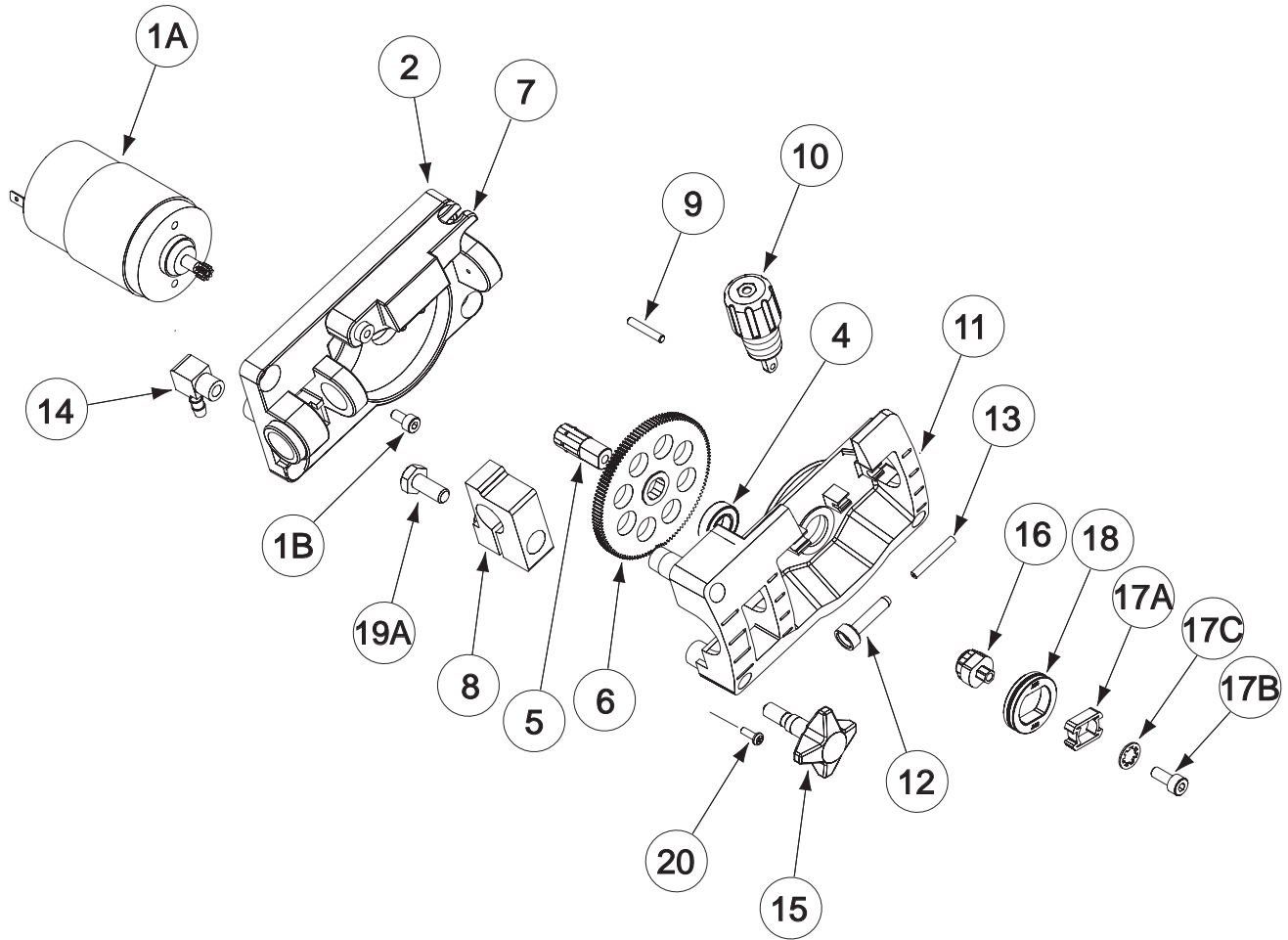
ITEM	DESCRIPTION	PART NO.	QTY.	1	2	3	4	5	6	7	8	9
1A	Case Front	G4812-2	1	X								
1B	Self Tapping Screw	S9225-63	4	X								
2A	Nameplate (Code 11173)	L12395-2	1	X								
2A	Nameplate (Code 11175)	L12395-3	1	X								
2A	Nameplate (Code 11300)	L12395-1	1	X								
2A	Nameplate (Code 11302)	L12817-1	1	X								
2A	Nameplate (Code 11303)	L12817-2	1	X								
2A	Nameplate (Code 11304)	L12817-3	1	X								
2A	Nameplate (Code 11440)	L12395-4	1	X								
2A	Nameplate (Code 11441)	L12395-5	1	X								
2A	Nameplate (Code 11501)	L12395-6	1	X								
2A	Nameplate (Code 11502)	L12395-7	1	X								
2A	Nameplate (Code 11503)	L12395-8	1	X								
2A	Nameplate (Code 11504)	L12395-9	1	X								
2A	Nameplate (Code 11505)	L12395-10	1	X								
2A	Nameplate (Code 11506)	L12395-11	1	X								
2A	Nameplate (Code 11550)	L12395-12	1	X								
2A	Nameplate (Code 11658)	L15014	1	X								#
3	Knob	S18425-1	2	X								
3A	Nut (Not Shown)	T10940-10	3	X								
3B	Lock Washer (Not Shown)	T9695-5	2	X								
4	Switch	T10800-59	1	X								
5A	Square Flange Female Receptacle	S18657	1	X								
5B	Self Tapping Screw	S8025-96	2	X								
6	Control P.C. Board	L12450-[]	1	X								
8	Thread Forming Screw	S8025-101	1	X								

Note: When ordering new printed circuit boards indicate the dash number [] of the "Old" board that is to be replaced. This will aid Lincoln in supplying the correct and latest board along with any necessary jumpers or adapters. The dash number brackets [] have purposely been left blank as to eliminate errors, confusion and updates.



Index of Sub Assemblies
 Sub Assembly Illustration
 Index of Sub Assemblies
 Sub Assembly Illustration
 Index of Sub Assemblies
 Sub Assembly Illustration
 Index of Sub Assemblies
 Sub Assembly Illustration

Wire Drive Assembly



Indicates a change this printing.

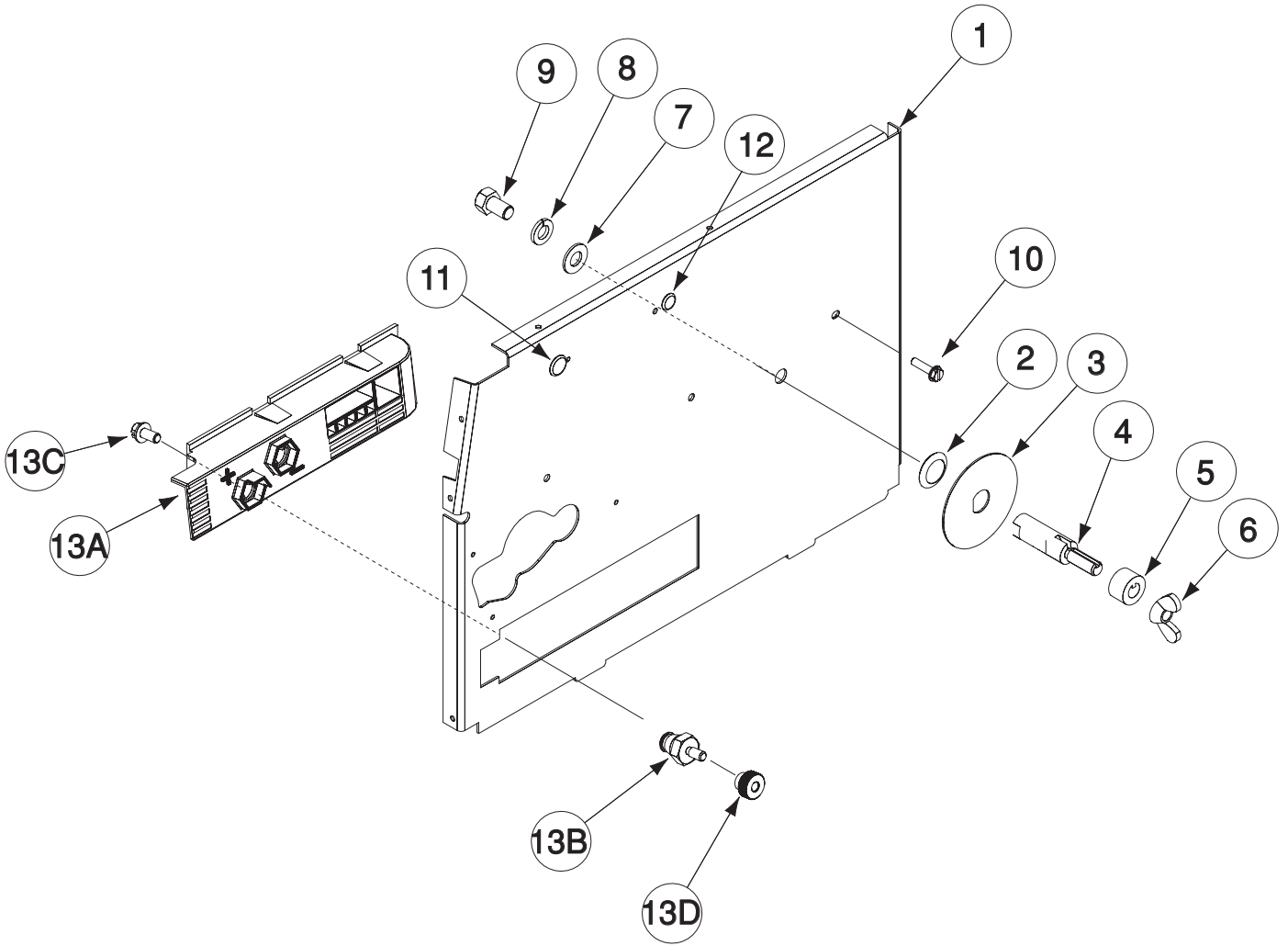
Use only the parts marked "x" in the column under the heading number called for in the model index page.

ITEM	DESCRIPTION	PART NO.	QTY.	1	2	3	4	5	6	7	8	9
1A	Wire Drive Assembly, Includes:	L12537-1	1	X								
	Motor (Includes Pinion Gear)	M20592-1	1	X								
1B	Metric Screw	T14731-63	2	X								
2	Base	L12389	1	X								
4	Bearing	M9300-141	2	X								
5	Shaft	S26311	1	X								
6	Gear	S26298	1	X								
7	Pivot Arm Assembly	S26357	1	X								
8	Conductor Block	S25931	1	X								
9	Dowel Pin	T13942-15	1	X								
10	Tension Arm Assembly	M20593	1	X								
11	Cover	L12538	1	X								
12	Outgoing Guide	KP2530-1	1	X								
13	Liner	S18685-6	1	X								
14	Hose Nipple	T13776-5	1	X								
15	Molded Hand Screw	T13858-4	1	X								
16	Hub	M20860	1	X								
17A	Twist Lock	S26238	1	X								
17B	Metric Screw	T14731-63	1	X								
17C	Washer	T9695-3	1	X								
18	Drive Roll	KP2529-3	1	X								
19A	1/4-20 x .625 HHCS	CF000013	1	X								
19B	Lock Washer (Not Shown)	E106A-2	1	X								
19C	Plain Washer (Not Shown)	S9262-98	1	X								
20	Self Tapping Screw	S8025-98	3	X								



Index of Sub Assemblies
 Sub Assembly Illustration
 Index of Sub Assemblies
 Sub Assembly Illustration
 Index of Sub Assemblies
 Sub Assembly Illustration
 Index of Sub Assemblies
 Sub Assembly Illustration

Center Panel Assembly



Indicates a change this printing.

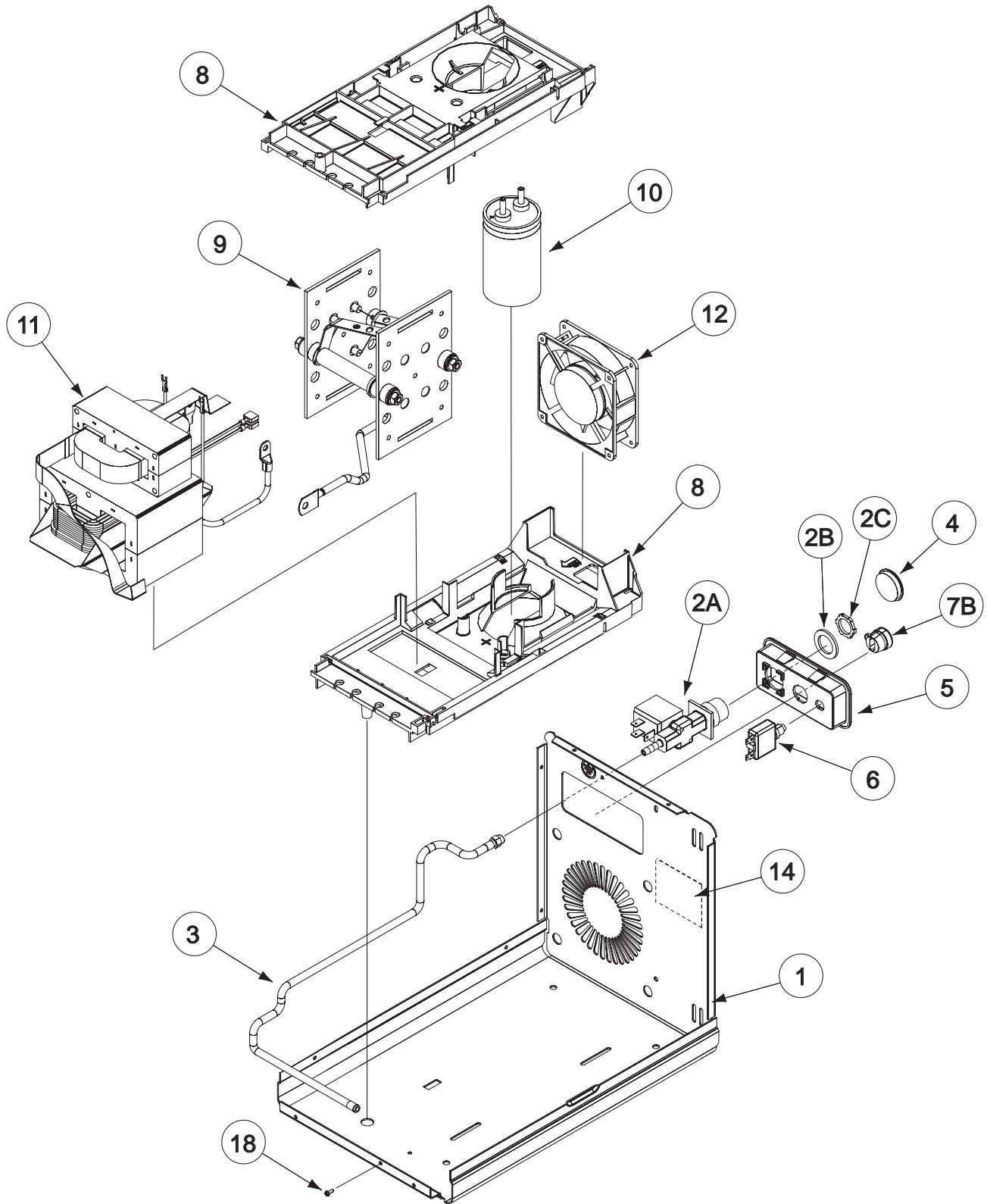
Use only the parts marked "x" in the column under the heading number called for in the model index page.

ITEM	DESCRIPTION	PART NO.	QTY.	1	2	3	4	5	6	7	8	9
1	Center Panel Assembly (L12322), Includes: Center Panel	NSS L12321	1 1	X X								
2	Bow Washer	T10781-10	1	X								
3	Wear Plate	S18423-1	1	X								
4	Spindle Shaft	S24227	1	X								
5	Spindle Spacer	S24226	1	X								
6	Wing Nut	T9968-5	1	X								
7	Plain Washer	S9262-120	1	X								
8	Lock Washer	E106A-16	1	X								
9	3/8-16 x .625 HHCS	CF000018	1	X								
10	Self Tapping Screw (Mounts Center Panel to Power Module)	S8025-101	6	X								
11	Plug Button	T10397-3	1	X								
12	Plug Button	T10397-19	1	X								
13A	Polarity Panel	L12555	1	X								
13B	Output Stud	S25937	2	X								
13C	1/4-20 x .50 HHCS (Not Shown)	CF000012	2	X								#
	Plain Washer (Not Shown)	S9262-23	2	X								#
	Lock Washer (Not Shown)	E106A-2	2	X								#
13D	Wing Nut	T9968-6	2	X								#



Index of Sub Assemblies
 Sub Assembly Illustration
 Index of Sub Assemblies
 Sub Assembly Illustration
 Index of Sub Assemblies
 Sub Assembly Illustration
 Index of Sub Assemblies
 Sub Assembly Illustration

Case Back, Bottom & Power Module Assembly



Index of Sub Assemblies
 Index of Sub Assemblies
 Index of Sub Assemblies
 Index of Sub Assemblies
 Index of Sub Assemblies

Part Numbers
 Part Numbers
 Part Numbers
 Part Numbers
 Part Numbers

Indicates a change this printing.

Use only the parts marked "x" in the column under the heading number called for in the model index page.

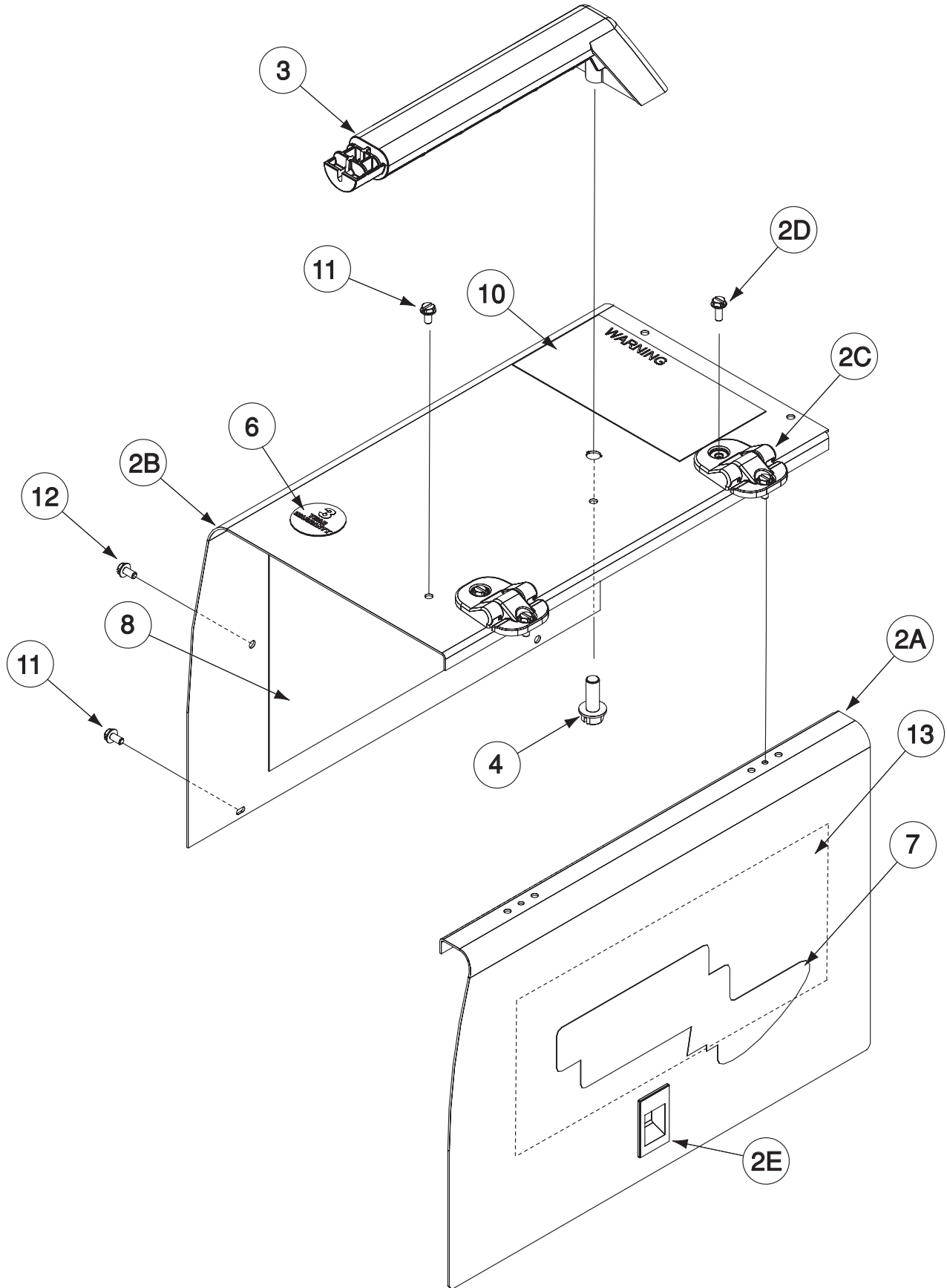
ITEM	DESCRIPTION	PART NO.	QTY.	1	2	3	4	5	6	7	8	9
1	Case Back & Bottom	G4718	1	X	X	X						
2A	Solenoid Valve Assembly	M17294-8	1	•	X	X						
2B	Plain Washer	S9262-149	1	•	X	X						
2C	Lock Nut	T14370-1	1	•	X	X						
3	Gas Hose	T10642-217	1	•	X	X						
4	Plug Button	T10397-23	1	X	•	•						
5	Input Panel	M20439-1	1	X	X	X						
6	Circuit Breaker	T12287-21	1	X	X	X						
7A	Power Cord (Not Shown) (125 & 140 Amp)	S25563-3	1	X	X	•						
7A	Power Cord (Not Shown) (180 Amp)	S15599-2	1	•	•	X						
7B	Lead Grommet	T9274-11	1	X	X	X						
8	Power Module Asbly (125 A) (G4716-1), Includes:	NSS	1	X	•	•						
	Power Module Asbly (140 A) (G4716-2), Includes:	NSS	1	•	X	•						
	Power Module Asbly (180 A) (G4716-3), Includes:	NSS	1	•	•	X						
8	Chassis	G4715	2	X	X	X						
9	Rectifier (125 & 140 Amp)	L12306	1	X	X	•						
9	Rectifier (180 Amp)	L12307	1	•	•	X						
10	Capacitor (125 & 140 Amp)	S13490-218	1	X	X	•						
10	Capacitor (180 Amp)	S13490-220	1	•	•	X						
11	Transformer & Choke Assembly (125 Amp)	G4808-1	1	X	•	•						
11	Transformer & Choke Assembly (140 Amp)	G4808-2	1	•	X	•						
11	Transformer & Choke Assembly (180 Amp)	G4808-3	1	•	•	X						
12	Fan (125 & 140 Amp)	S18977-4	1	X	X	•						
12	Fan (180 Amp)	S18977-5	1	•	•	X						
13	Flange Bolt (Not Shown)	S9225-8	2	X	X	X						
14	Rating Decal (125 Amp)	S26499-1	1	X	•	•						
	Rating Decal (140 Amp)	S26499-2	1	•	X	•						
	Rating Decal (180 Amp)	S26499-3	1	•	•	X						
Hardware for Mounting Rectifier & Choke Leads to Capacitor:												
15A	1/4-28 HN (Not Shown)	CF000198	2	X	X	X						
15B	Plain Washer (Not Shown)	S9262-98	2	X	X	X						
15C	Lock Washer (Not Shown)	E106A-2	2	X	X	X						
Grounding Screw Mounting Hardware:												
16A	Thread Forming Screw (Not Shown)	S9225-36	1	X	X	X						
16B	#10-24 HN (Not Shown)	CF000010	2	X	X	X						
16C	Lock Washer (Not Shown)	T9695-1	1	X	X	X						
Hardware to Secure Leads to Ground Screw:												
17A	#10-24 HN (Not Shown)	CF000010	1	X	X	X						
17B	Lock Washer (Not Shown)	E106A-1	1	X	X	X						
17C	Plain Washer (Not Shown)	S9262-27	1	X	X	X						
18	Self Tapping Screw (Mounts Center Panel to Case Back & Bottom)	S8025-92	3	X	X	X						#
19	Country of Origin Decal (Not Shown) (Code 11658 Only)	S24727-2	1	•	X	•						#
20	Serial Number Decal (Not Shown) (Code 11658 Only)	S25940	1	•	X	•						



Index of Sub Assemblies

Sub Assembly Illustration

Wraparound & Door Assembly



Index of Sub Assemblies
Index of Sub Assemblies
Index of Sub Assemblies
Index of Sub Assemblies

Part Numbers
Part Numbers
Part Numbers
Part Numbers

Indicates a change this printing.

Use only the parts marked "x" in the column under the heading number called for in the model index page.

ITEM	DESCRIPTION	PART NO.	QTY.	1	2	3	4	5	6	7	8	9
	Side & Door Asbly (M20452-2), Includes:	NSS	1	X								
	Side & Door Asbly (M20452-3), Includes:	NSS	1	X								
2A	Door	L12320-1	1	X								
2B	Case Side	G4719-1	1	X								
2C	Hinge (Includes: S25898-2)	S25898-1	2	X								
2D	Self Tapping Screw	S8025-91	4	X								
2E	Door Latch	S21033	1	X								
3	Handle	L12602	1	X								
4	Thread Forming Screw	S9225-53	1	X								
6	Warranty Decal	S22127-1	1	X								
7	Side Decal (Code 11506 Only)	T13086-172	2	X								
7	Side Decal	S27368-2	2	X								#
8	Wiring Diagram	M20410	1	X								
10	Warning Decal	M16196	1	X								
11	Self Tapping Screw	S8025-92	8	X								
12	Self Tapping Screw	S8025-101	1	X								
13	Procedure Decal (125 Amp) (Codes 11300, 11302, 11503, 11506 & 11550)	L12603-1	1	X								
13	Procedure Decal (140 Amp) (Codes 11173, 11303, 11440, 11501, 11504 & 11658)	L12603-2	1	X								
13	Procedure Decal (180 Amp) (Codes 11175, 11304,11441, 11502 & 11505)	L12603-3	1	X								
14	Nascar Decal (All Codes Except 11506)	S27370-2	1	X								



Index of Sub Assemblies
 Sub Assembly Illustration
 Index of Sub Assemblies
 Sub Assembly Illustration
 Index of Sub Assemblies
 Sub Assembly Illustration
 Index of Sub Assemblies
 Sub Assembly Illustration

NOTES

Index of Sub Assemblies
Index of Sub Assemblies
Index of Sub Assemblies
Index of Sub Assemblies

WIRE FEEDER WELDERS (125, 140, 180 MODELS)

